

# Office of Special Education Programs Technical Assistance Network



## TA&D Program Centers

- Center for Appropriate Dispute Resolution in Special Education (CADRE) [cadreworks.org](http://cadreworks.org)
- Center on Great Teachers and Leaders (GTL Center) [gtlcenter.org](http://gtlcenter.org)
- Center on Positive Behavioral Interventions and Supports (PBIS) [pbis.org](http://pbis.org)
- Early Childhood Technical Assistance Center (ECTA Center) [ectacenter.org](http://ectacenter.org)
- Literacy for Leaders (L4L) [leadforliteracy.org](http://leadforliteracy.org)
- National Center for Pyramid Model Innovations (NCPMI) [challengingbehavior.cbcs.usf.edu](http://challengingbehavior.cbcs.usf.edu)
- National Center for Systemic Improvement (NCSI) [wested.org/project/national-center-for-systemic-improvement](http://wested.org/project/national-center-for-systemic-improvement)
- National Center on Deaf-Blindness (NCDB) [nationaldb.org](http://nationaldb.org)
- National Center on Educational Outcomes (NCEO) [nceo.info](http://nceo.info)
- National Center on Intensive Intervention (NCII) [intensiveintervention.org](http://intensiveintervention.org)
- National Deaf Center (NDC) [nationaldeafcenter.org](http://nationaldeafcenter.org)
- National Technical Assistance Center on Transition (NTACT) [transitionta.org](http://transitionta.org)
- State Implementation and Scaling-up of Evidence-based Practices Center (SISEP) [sisep.fpg.unc.edu](http://sisep.fpg.unc.edu)
- The TIES Center (TIES): Increasing Time, Instructional Effectiveness, Engagement, and State Support for Inclusive Practices for Students with Significant Cognitive Disabilities [ici.umn.edu/projects/view/203](http://ici.umn.edu/projects/view/203)



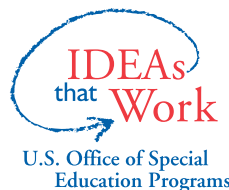
## Technology, Personnel, and Data Centers

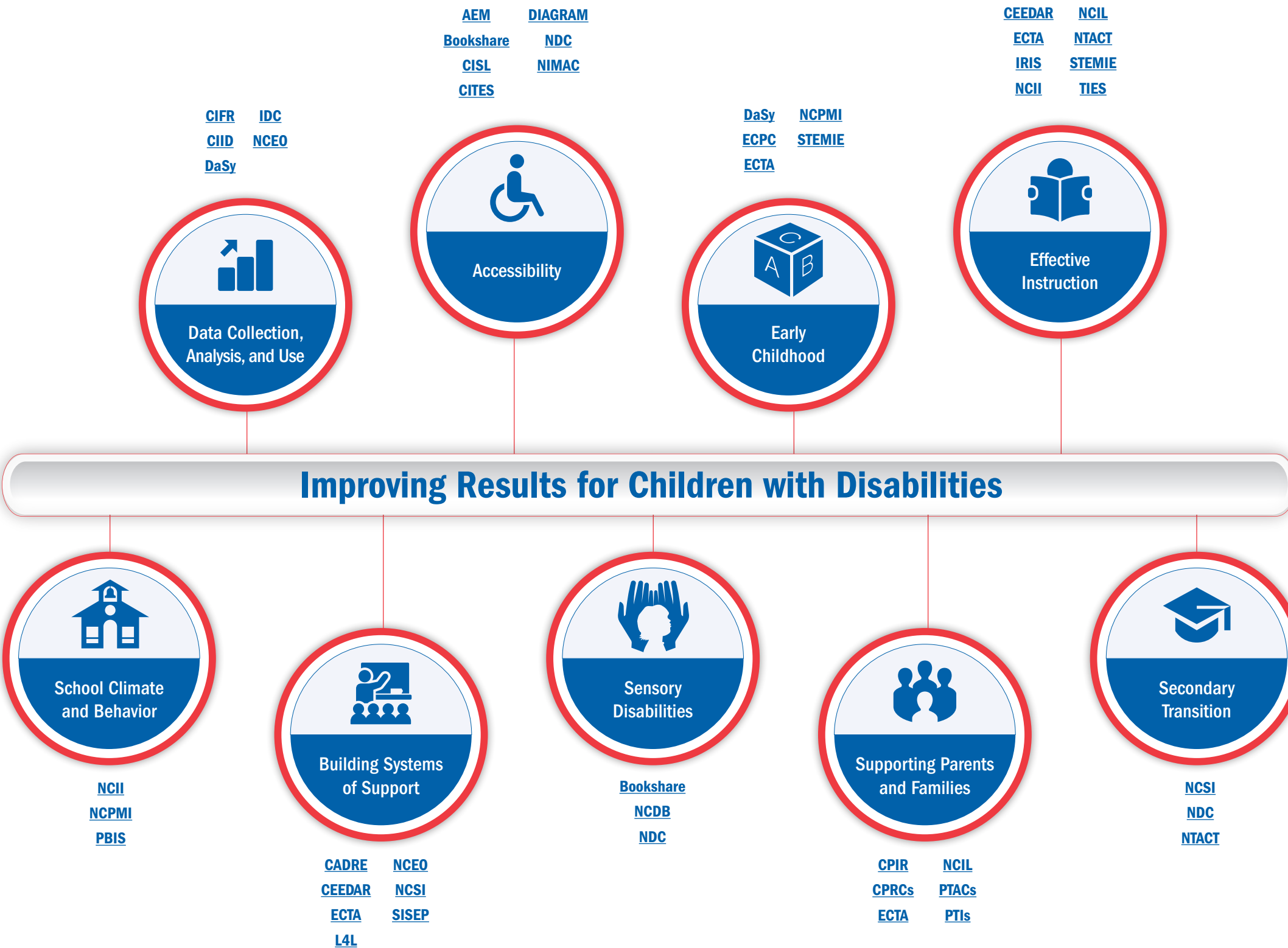
- Bookshare [bookshare.org/cms](http://bookshare.org/cms)
- Center for IDEA Fiscal Reporting (CIFR) [cifr.wested.org](http://cifr.wested.org)
- Center on Inclusive Software for Learning (CISL) [cisl.cast.org](http://cisl.cast.org)
- Center on Technology Systems in Local Educational Agencies/Center on Inclusive Technology & Education System (CITES) [cites.cast.org](http://cites.cast.org)
- Collaboration for Effective Educator Development, Accountability, and Reform Center (CEEDAR Center) [ceedar.education.ufl.edu](http://ceedar.education.ufl.edu)
- DIAGRAM Center [diagramcenter.org](http://diagramcenter.org)
- Early Childhood Personnel Center (ECPC) [ecpcta.org](http://ecpcta.org)
- Early Childhood STEM Center (STEMIE) [stemie.fpg.unc.edu](http://stemie.fpg.unc.edu)
- IDEA Data Center (IDC) [ideadata.org](http://ideadata.org)
- IRIS Center [iris.peabody.vanderbilt.edu](http://iris.peabody.vanderbilt.edu)
- National Center on Accessible Educational Materials (AEM) [aem.cast.org](http://aem.cast.org)
- National Center on Improving Literacy (NCIL) [improvingliteracy.org](http://improvingliteracy.org)
- National Instructional Materials Access Center (NIMAC) [nimac.us](http://nimac.us)
- The Center for IDEA Early Childhood Data Systems (DaSy) [dasycenter.org](http://dasycenter.org)
- The Center for the Integration of IDEA Data (CIID) [ciidta.grads360.org/#program](http://ciidta.grads360.org/#program)



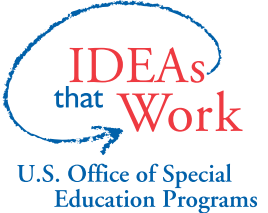
## Parent Program Centers

- Center for Parent Information and Resources (CPIR) [parentcenterhub.org](http://parentcenterhub.org)
- Community Parent Resource Centers (CPRCs) [parentcenterhub.org/find-your-center](http://parentcenterhub.org/find-your-center)
- Parent Training and Information Centers (PTIs) [parentcenterhub.org/find-your-center](http://parentcenterhub.org/find-your-center)
- Regional Parent Technical Assistance Centers (RPTACs) [parentcenterhub.org/rptacs](http://parentcenterhub.org/rptacs)





OSEP funds discretionary projects under the IDEA. For more information on the discretionary projects funded by OSEP (and to search projects by location or topic area) visit the [IDEAs that Work](#) website.



OSEP's [ED.gov](#) website has information on both the discretionary and formula grants funded by OSEP. For more information on each center, please view the reverse side.